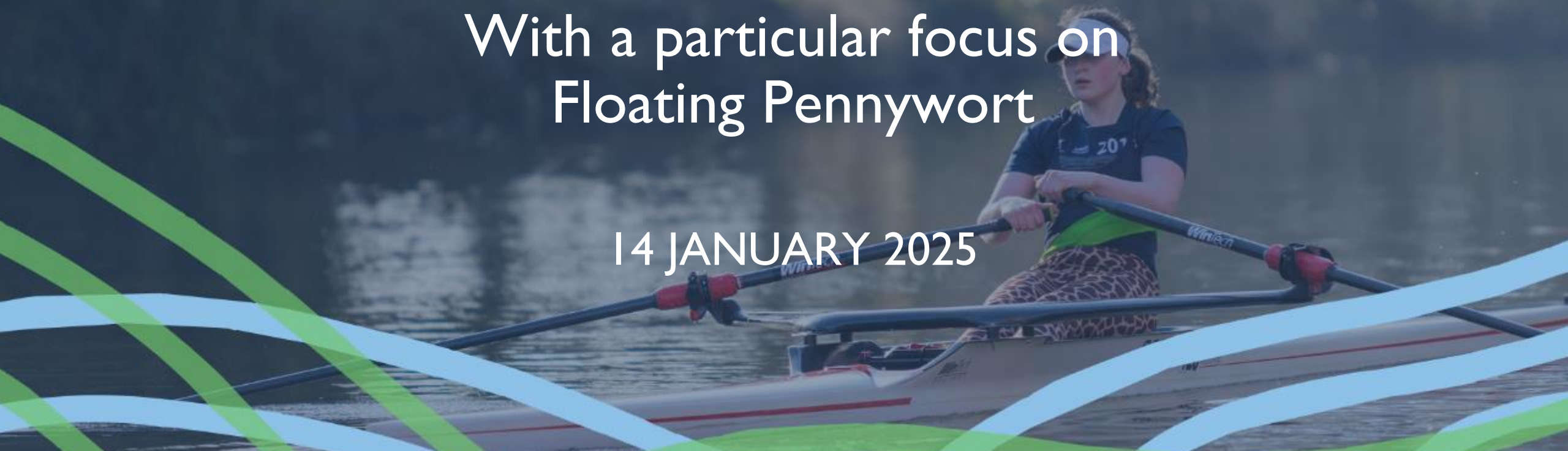




INVASIVE SPECIES WEBINAR

With a particular focus on
Floating Pennywort

14 JANUARY 2025



WHY ARE WE HERE?

- To introduce you to Floating Pennywort
- To help you recognise the problem
- To let you know what you can do about it
- To provide you with resources you can use
- To show you where to go if you see it
- Questions at the end



WHAT IS FLOATING PENNYWORT?



Impact on Rowing Events & Clubs

9 events cancelled over last 3 years

Loss of revenue **at least** £1,000 per club

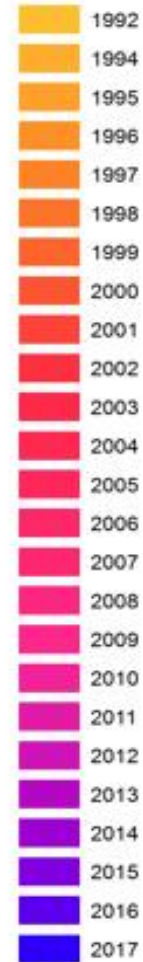


WHY CARE?

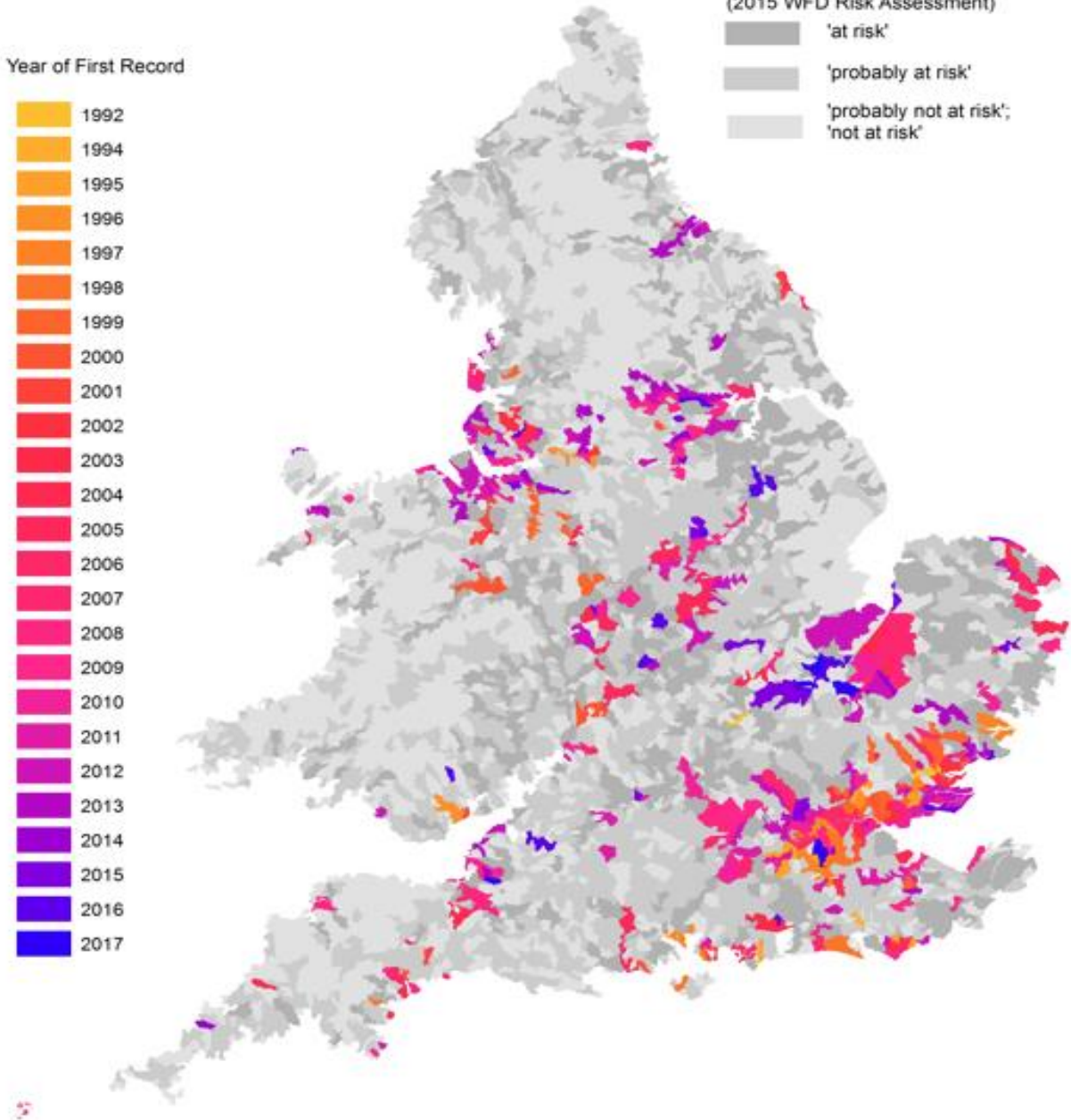
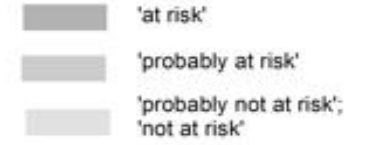


Floating Pennywort: Year of first colonisation

Year of First Record



Risk of deterioration
(2015 WFD Risk Assessment)



CASE STUDY



BROXBOURNE ROWING CLUB

A club for everyone

WHAT YOU CAN DO ABOUT IT

**STOP
THE
SPREAD**



AWARENESS

- Raise awareness in clubs and regions
- Inspect your own river regularly
- Free resources to help (leaflets, posters etc.) please contact: sustainability@britishrowing.org



1. Join/arrange an organised volunteer day to remove FP
2. Details for this will be sent out after the webinar
3. Make one of your club events a clean up day with all members e.g. 31 May as part of Paddle UK's Clean Up - this could also be a 'Floating Pennywort Clear Up' !

Equipment:

- First aid kits and First aider
- Stable boats/paddle boards/ buoyancy aids/ hand sanitiser
- Protective gloves ideally from Safetex (robust outdoor gloves)
- Garden rakes/ Long handled 3 pronged fork
- Shears
- Trug buckets
- Tarpaulin to put on the bank to catch small fragments
- Large freshwater container
- Long pole dipping nets
- Brushes/sponges for washing & biosecurity

- Start at the top of the river where the FP is found
- Find a safe spot to work from with permission from landowners to deposit the weed on side of bank (as per video)
- Safety brief for all the participants and do a risk assessment
- Launch craft from side of bank with volunteers breaking free the FP on the water by “Cut and Float” method to transport to side bank volunteers who pull up weed in small sections
- Work with your local groups to coordinate a stretch of river working from upstream to downstream to save recontamination
- Always wash and clean equipment at the end of the session

WHO TO CONTACT

- **Paddle UK/British Rowing**
- Sustainability@britishrowing.org

Or

- Non Native Species Secretariat - reporting tool, website/app - location with What3Words:
- www.nonnativespecies.org/recording

Or

- Canal & Rivers Trust
- Call: 0303 040 4040

Or

- Environment Agency
- Call: 03708 506506
- enquiries@environment-agency.gov.uk

PADDLE^{UK}



**ANGLING
TRUST**



Email Contact

Sustainability@britishrowing.org

Further information

<https://www.britishrowing.org/sustainability/>

Questions

